



Mask Pattern

Washable Mask

You'll Need

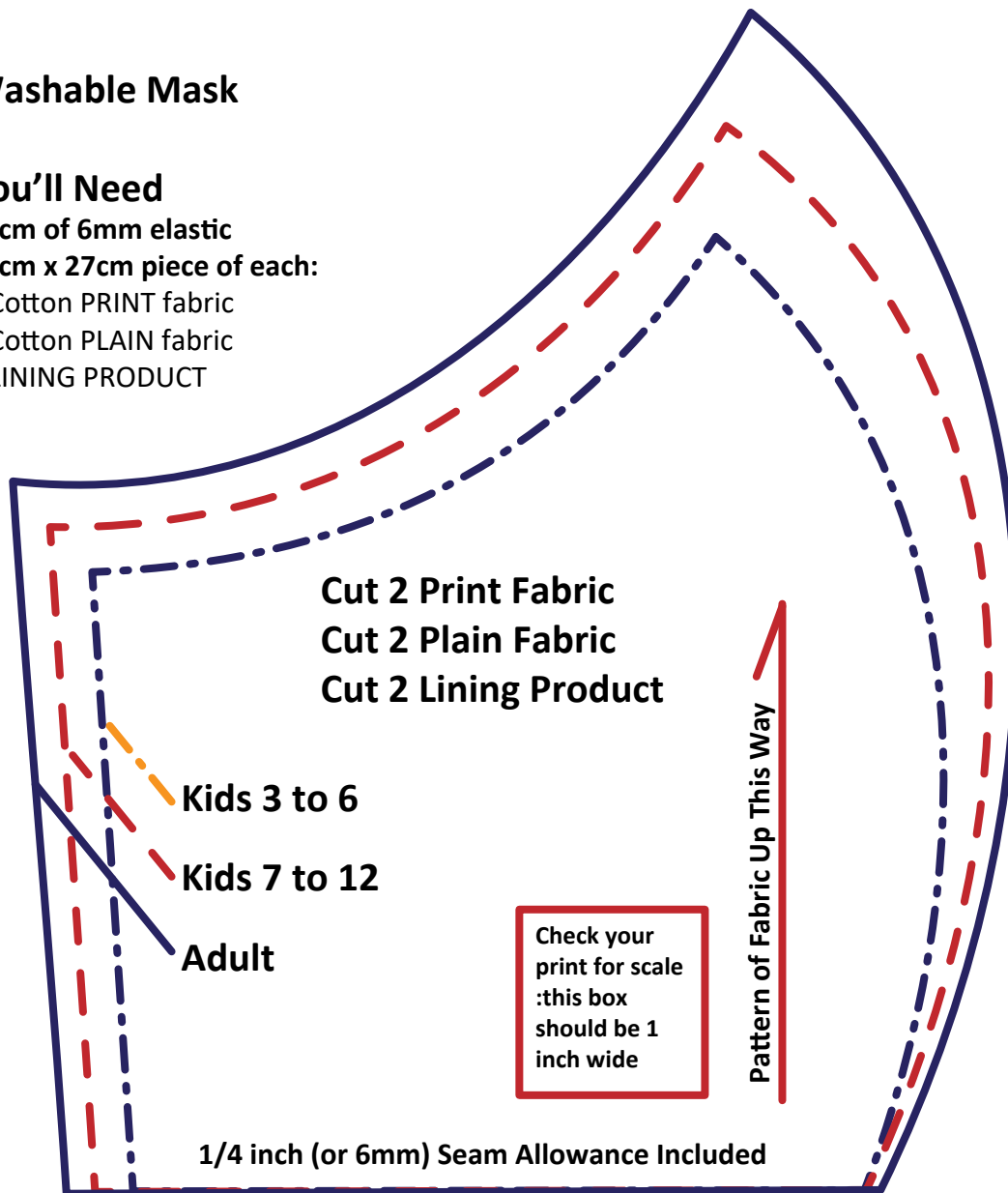
35cm of 6mm elastic

27cm x 27cm piece of each:

Cotton PRINT fabric

Cotton PLAIN fabric

LINING PRODUCT



Tip! To print this pattern so that it is the right size, set scale to 100%

Page Sizing & Handling ⓘ

Size	Poster	Multiple	Booklet
------	--------	----------	---------

☐ Fit ☐ Actual size

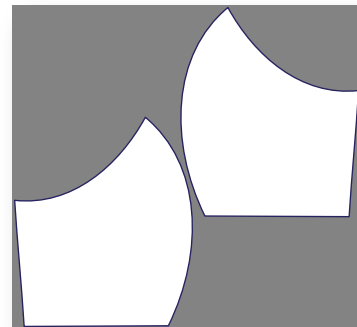
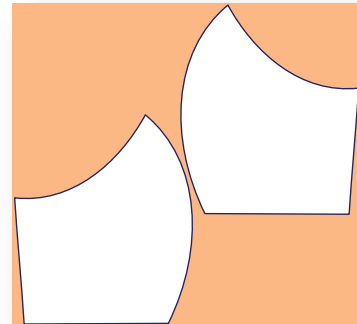
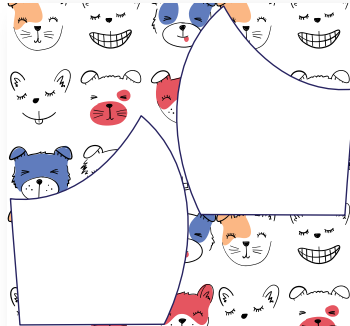
☐ Shrink oversized pages ☒ Custom Scale: 100 %

We think it's important that you know that this is not a pattern for a mask that is recognised as a personal protective device. This pattern will sew best with 100% cotton fabrics, and a non-woven interfacing that does not have glue on it. We have used a new washable mattress protector that you can pick up from most bargain stores. Please, wash your mask before use as fabrics are often chemically treated to keep them looking good on the shelf. Please feel free to share this pattern.

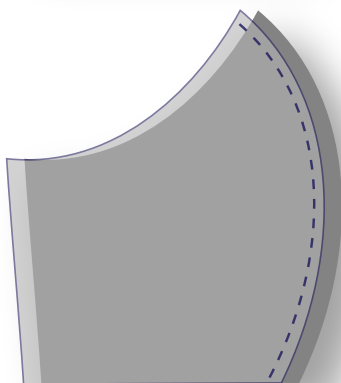
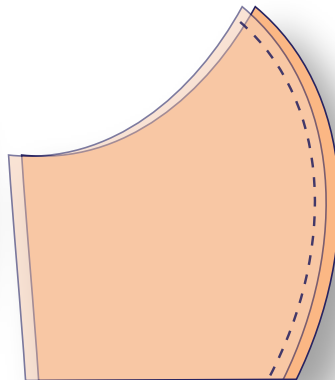


1: Trace 2 of the size of pattern that you want, 1 facing to the left and one mirrored to the right.

2: Cut 2 mask pattern pieces out of each of your PRINT fabric, PLAIN fabric, and your LINING PRODUCT.



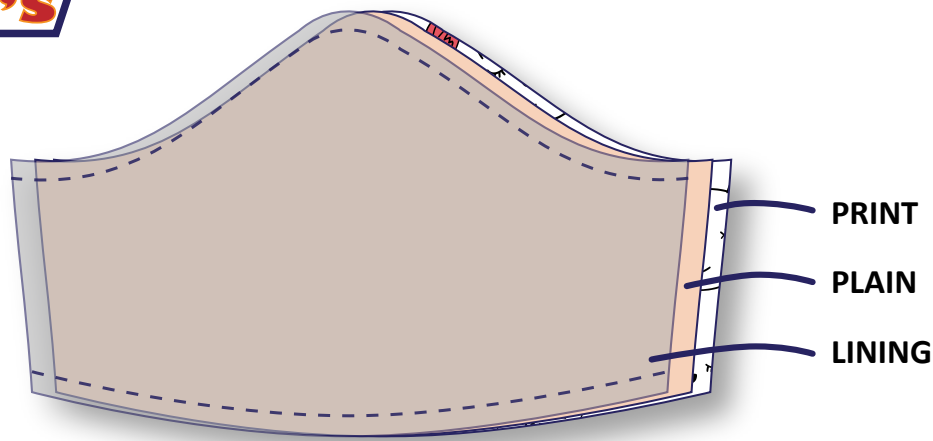
Tip! Be careful to keep your fabric print pointing up the right way!



3: Pin the pair of PRINT pieces to themselves with the right-sides facing each other. Repeat with PLAIN pieces and with LINING pieces.

4: On each pair, sew a seam around the outwards curve with your needle 1/4 inch (or 6mm) away from the edge.

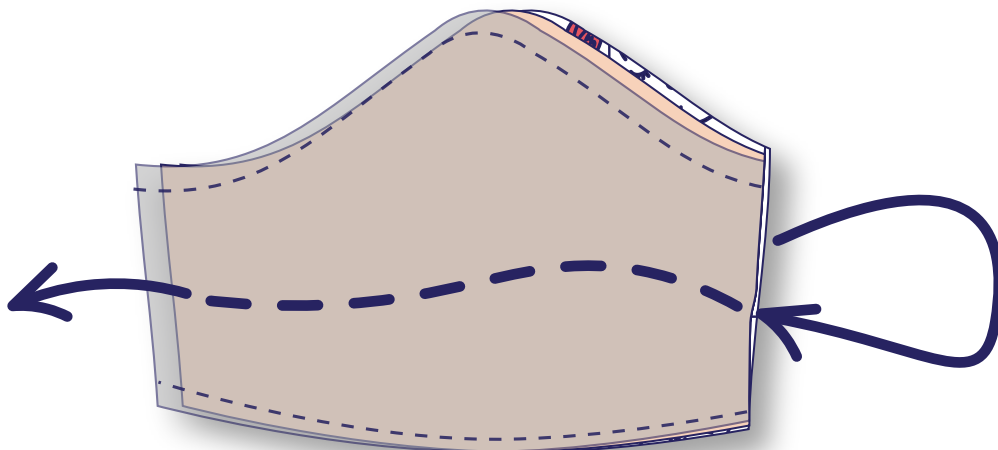
Tip! To make your mask last longer you can also zig zag the edges of your seams to stop them from fraying...



5: Fold out the joined pairs so you now have 3 mask pieces - a PRINT piece, a PLAIN inner, and a LINING PRODUCT lining.

Tip! To make your mask last longer you can also zig zag the edges of your seams to stop them from fraying...

6: Layer the PRINT piece and the PLAIN piece together, with right-sides facing each other. Layer the LINING piece over the PLAIN piece wrong-sides together. Pin and Sew a seam with your needle 1/4 inch (or 6mm) away from the top and bottom edge of each pair.



7: Gently turn the mask through the open ends so it is right-sides-out. Use your fingers to smooth out your seams to tidy the shape of your mask. Press with a warm - not hot.

Tip! Turn this out the right way using small, gentle tucks to stop the edges from stretching!



8: Fold approximately 1/2 inch or 12mm of the open ends inwards and over themselves so they are tucked into the inside of your mask. Using a warm - not hot - iron, press these tucked-in ends, and then pin them into place.

Tip! If you can't get your hands on elastic, try cutting a hair-tie!



9: Using a comfortable measurement to fit you, pop elastic into the top and the bottom of the tucked-in ends. You should have at least 1/2 inch or 12mm of each end of the elastic inside the mask. Pin into place.

10: To secure elastic, and to finish your mask neatly, sew all the way around the outside of your mask with your needle very close to the edge (less than 1/4 inch), catching the elastic as you go. To secure your elastic extra tightly, you can reverse back and forth as you go over it.